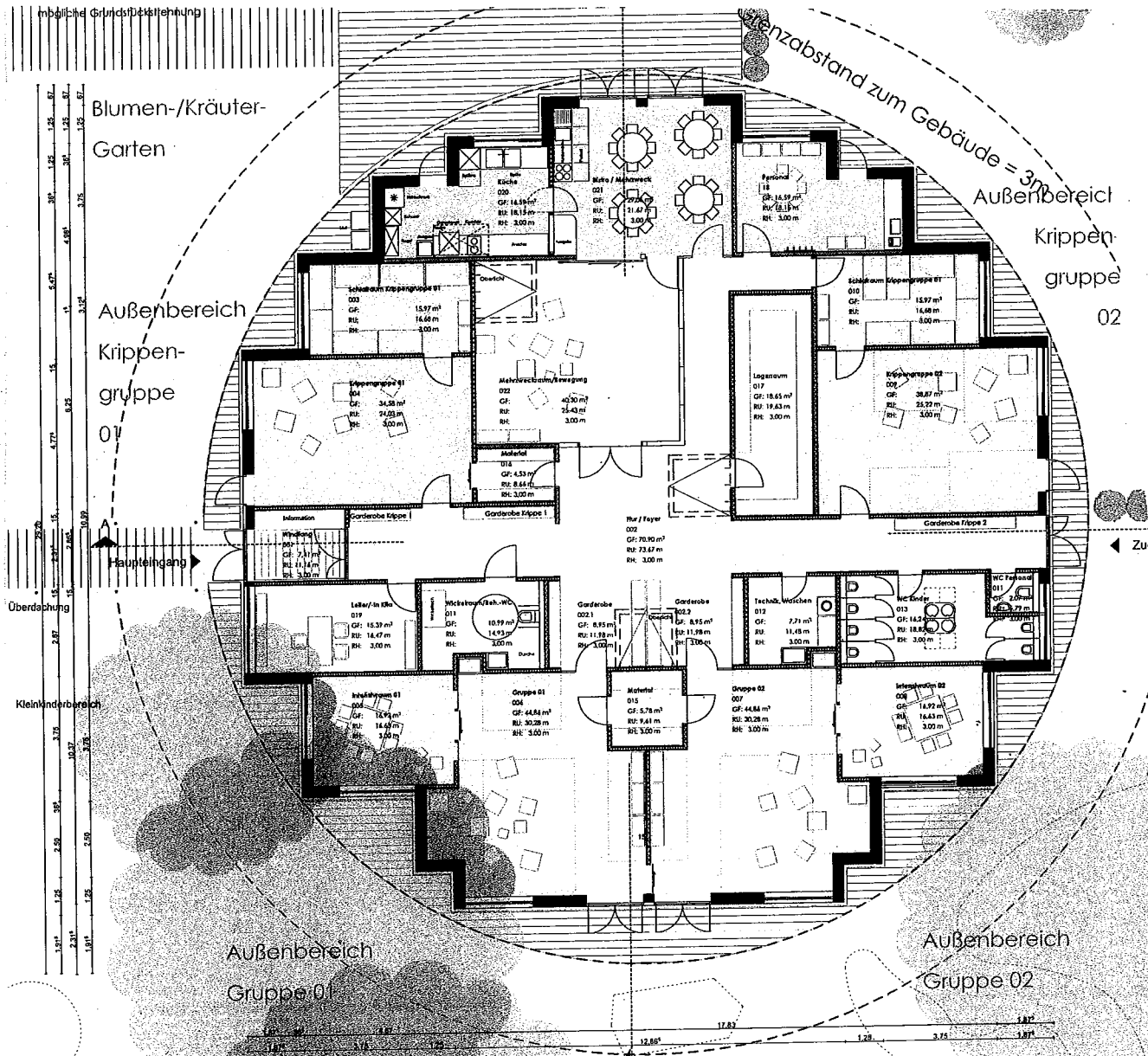
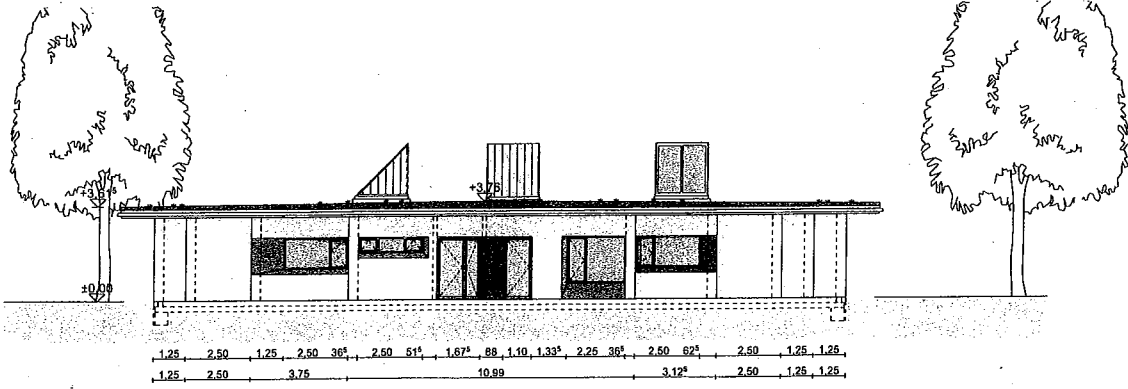


# ANLAGE 1

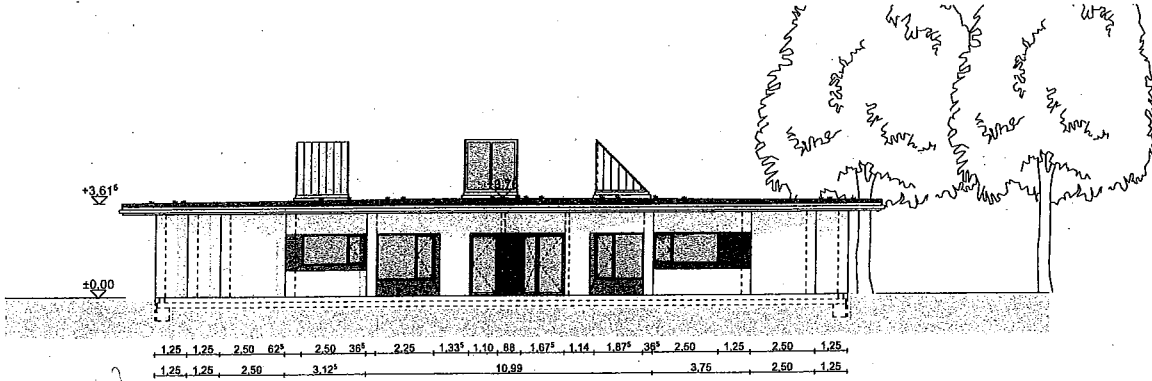


GRUNDRISS  
NEU BAU

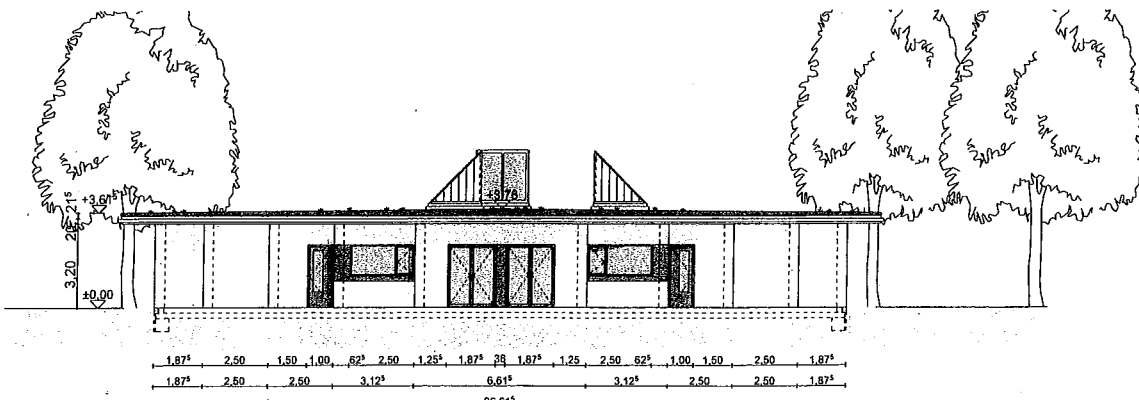
# ANLAGE 2



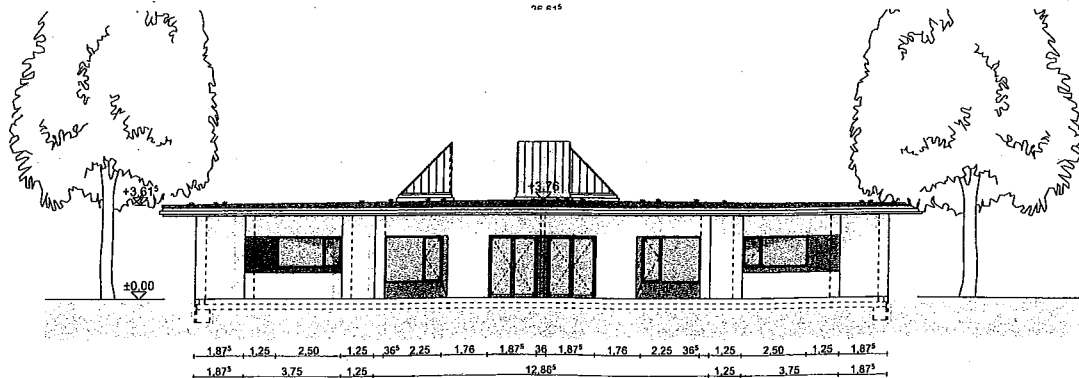
Ansicht Ost 1:100



Ansicht West 1:100



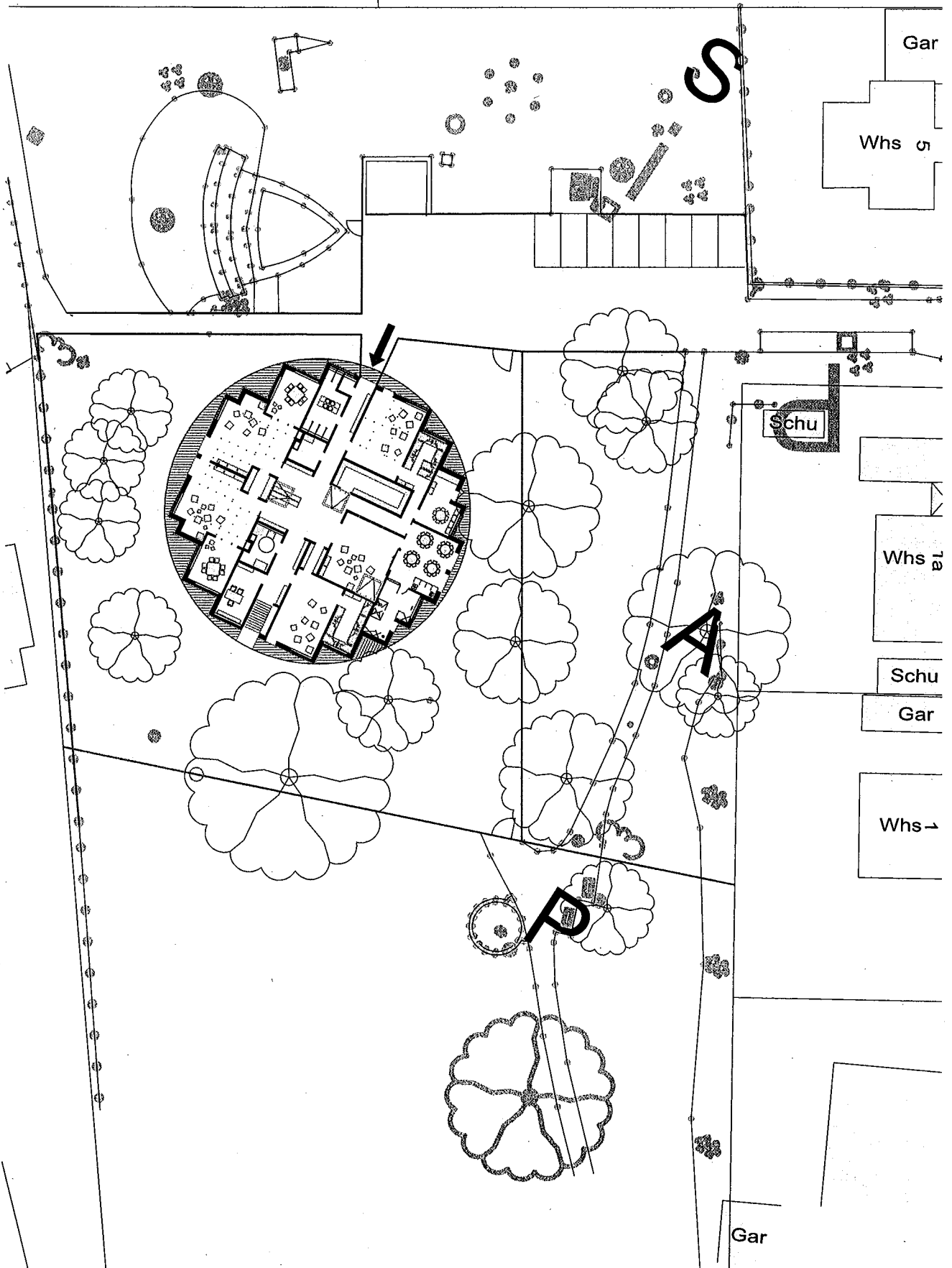
Ansicht Nord 1:100



Ansicht Süd 1:100

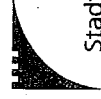
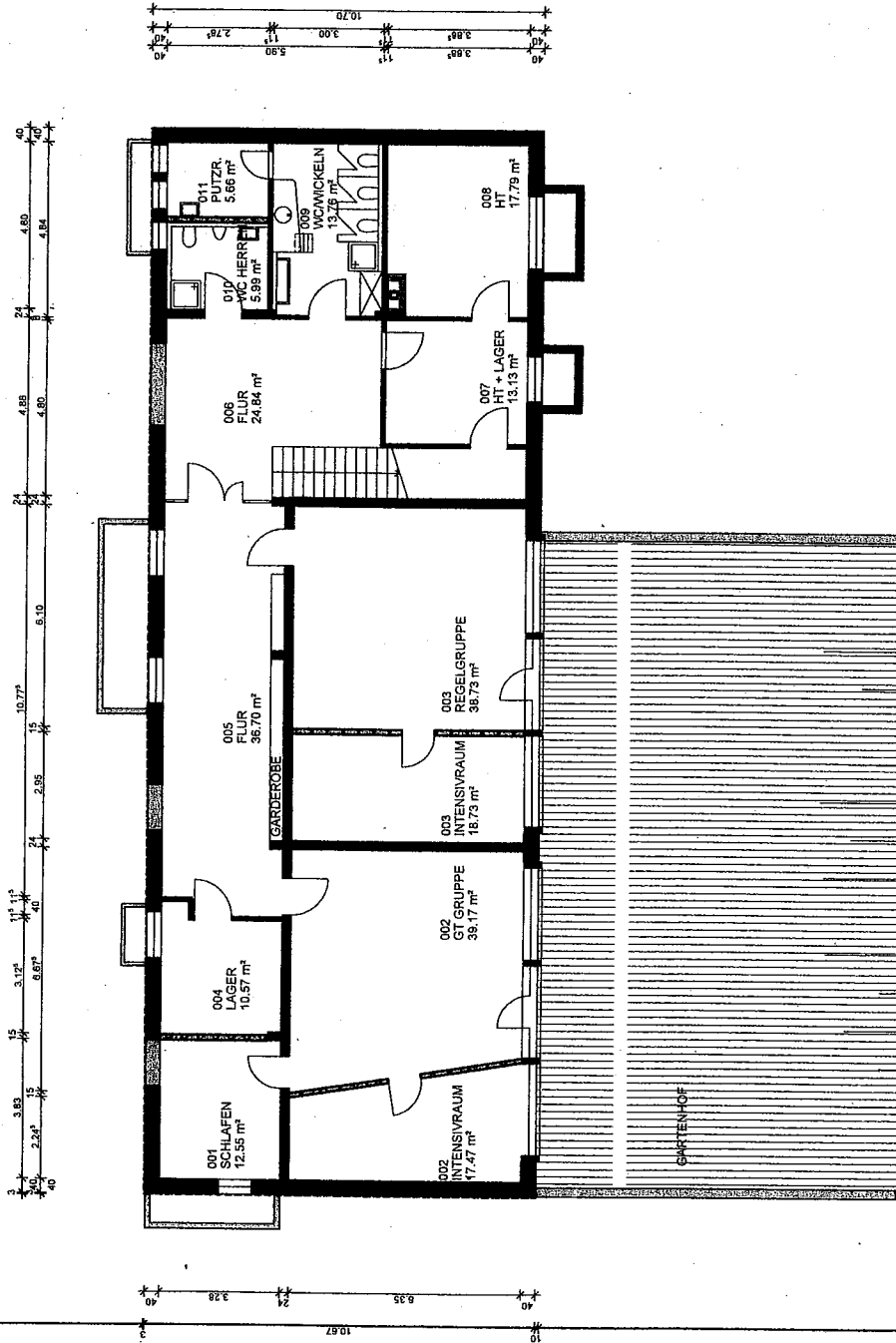
ANSICHTEN NEU BAU

# ANLAGE 3



LAGEPLAN NEUBAU

# ANLAGE 4



Stadt  
Offenburg

Fachbereich 5  
**Hochbau, Grünflächen und Umweltschutz**  
Wilhelmsstrasse 12  
77654 Offenburg

Abteilung 5.2  
**Gebäudemanagement**

Bauvorhaben: **KITA BÜHL**

Planinhalt: **GARTENEbene**

Datum: 30.07.2012 Der Bauherr:

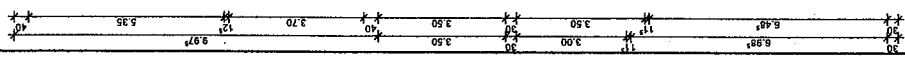
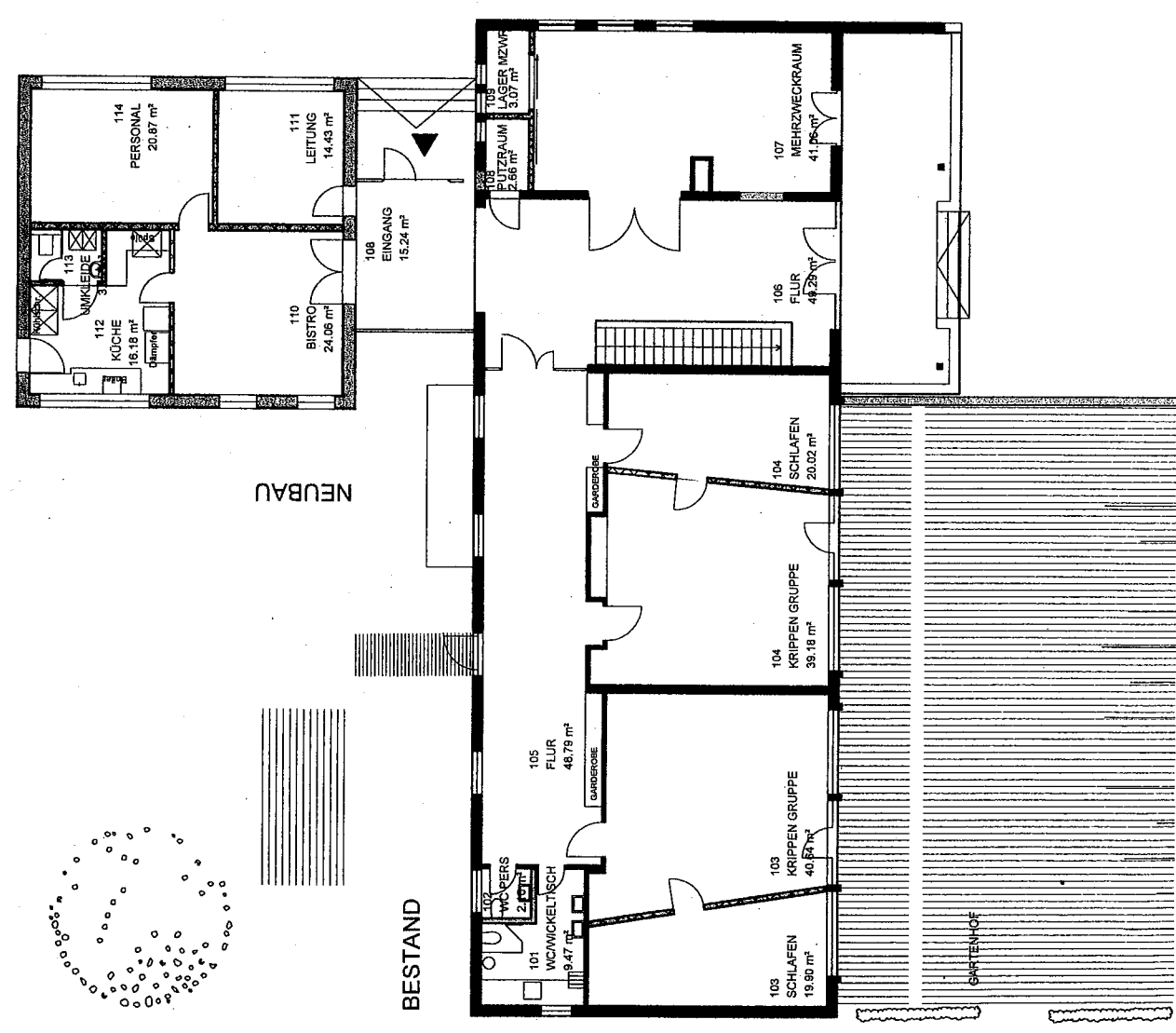
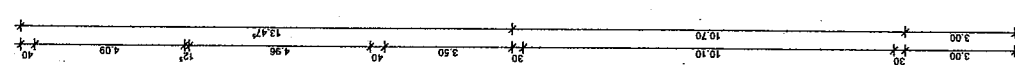
Gezeichnet:

HB = 420 / 594 (0.25m²)

Gebäude Nr.

Fachbereichsleitung:  
Alban 2011

# ANLAGE 5



Fachbereich 5  
**Hochbau, Grünflächen und Umweltschutz**  
 Wilhelmstrasse 12  
 77654 Offenburg  
 Abteilung 5.2  
**Gebäudemanagement**  
 Stadt  
 Offenburg  
 Bauvorhaben: **KITA BÜHL**  
 Planinhalt: **OBERE EBENE**  
 Gebäude Nr.:

Datum: 01.08.2012 Der Bauherr:  
 Bearbeiter:  
 Gezeichnet:  
 Fachbereichsleitung:

# ANLAGE 6

95/2 A

95/3 A

95/4 Weg

Gewhs

U

WHS  
4  
Gar

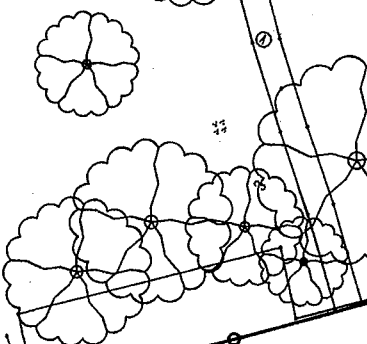
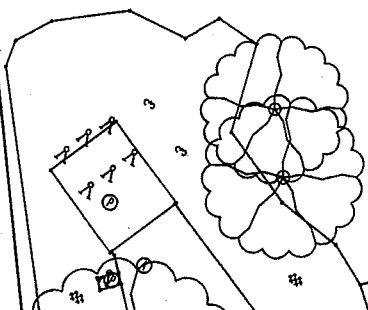
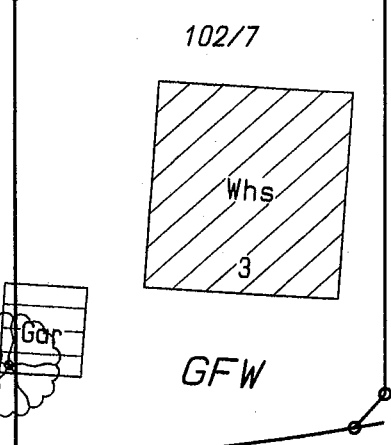
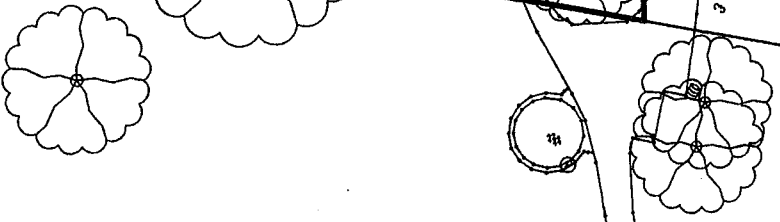
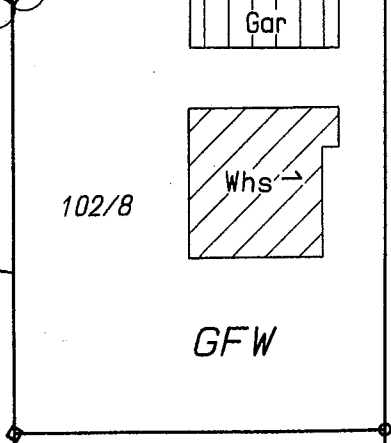
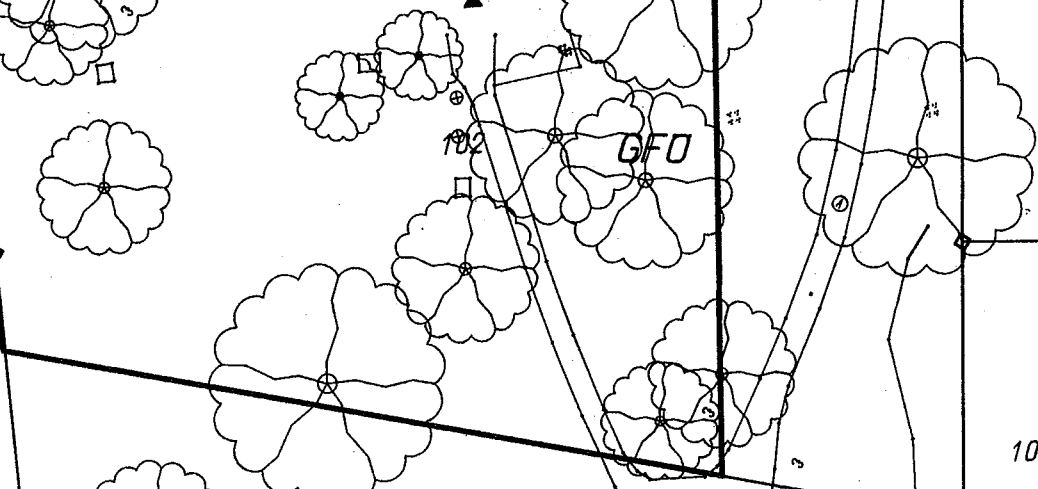
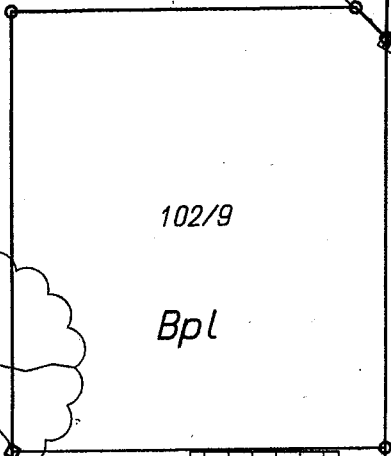
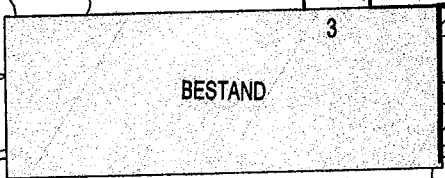
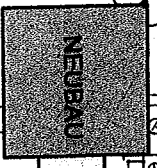
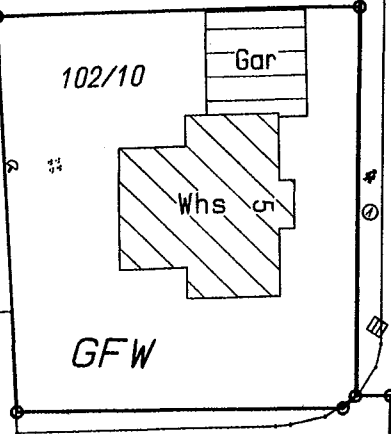
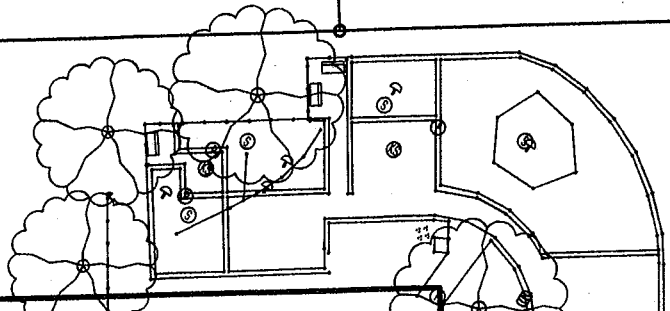
98

GFW

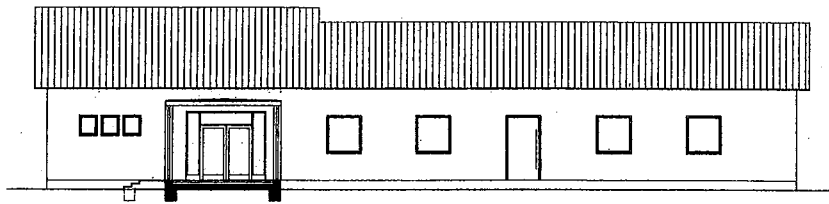
hohofweg

A

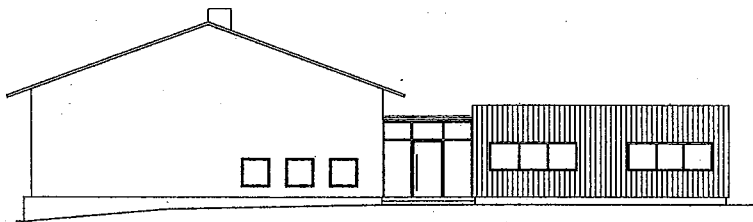
66 S



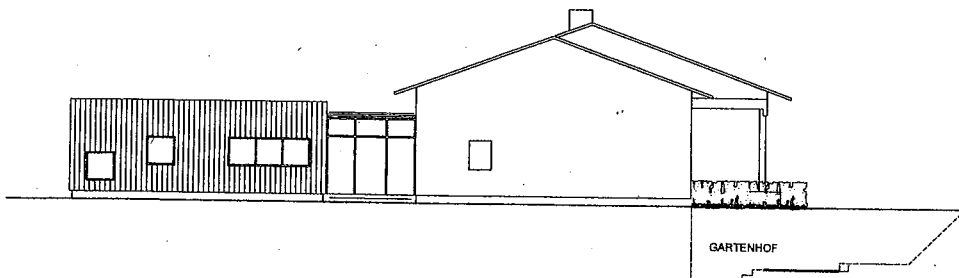
# ANLAGE 7



NORDWESTEN



NORDOSTEN



SÜDWESTEN



SÜDOSTEN



Stadt  
Offenburg

Fachbereich 5  
Hochbau, Grünflächen und Umweltschutz  
Wilhelmstraße 12  
77654 Offenburg

Abteilung 5.2  
Gebäudemanagement

Gebäude Nr.

Bauvorhaben: KITA BÜHL

Planinhalt: ANSICHTEN

Datum:  
Bearbeitet:  
Freigegeben:

Projektium: